



IMPACT REPORT

2023-2024

www.wits.edu

TABLE OF CONTENTS



CELEBRATING

26
YEARS

OUR MISSION	3
LEADERSHIP & BOARD	4-5
WHAT SETS WITS APART	6-7
ACADEMICS	8-15
JOINT HIGH SCHOOL/COLLEGE PROGRAM	16
ISRAEL STUDY ABROAD PROGRAM	17
CAREER SERVICES	18-21
STUDENT AFFAIRS	22-23
ALUMNAE ASSOCIATION	24-25
OUR FACILITY	26-27
ENROLLMENT & RECRUITMENT	28
STUDENT ACHIEVEMENT	29
FINANCIALS	30
DONOR OPPORTUNITIES	31

OUR MISSION

The mission of Women's Institute of Torah Seminary & College (WITS) is to provide Orthodox Jewish women with an in-depth, values-centered, academic experience in both Judaic and general studies.

OUR VISION



WITS is a premier institution for Orthodox Jewish women offering rigorous study of classical Jewish thought and in-depth analysis of text and literature.



A WITS education enables graduates to enter professions in a range of fields or pursue further study in graduate schools. Via a distinctive values-centered approach, WITS academic programs promote traditional Jewish standards thereby preparing students for life.



WITS provides a foundation in core subject areas, including English language and composition, computer science, natural and social sciences, humanities, mathematics, and arts, as well as pre-professional coursework.





OUR LEADERSHIP

MENAHELES

Rebbetzin Ettie Rosenbaum



Rebbetzin Ettie Rosenbaum is the Executive Dean/Menacheles of WITS. With over 40 years of experience, Rebbetzin Rosenbaum is known for her extensive record of excellence in the field of Jewish education. Since its inception in 1998, WITS has flourished under her leadership and developed into an institution of advanced learning.

ACADEMIC DEAN

Dr. Leslie Klein



Dr. Leslie Ginsparg Klein, Academic Dean at WITS since 2013, is a visionary leader. She consistently demonstrates innovation and intellectual sophistication in her approach to higher education. Under her leadership, WITS has formed new partnerships, introduced new degree programs, and achieved candidacy status with the Middle States Commission on Higher Education (MSCHE).

OUR STAFF

BOARD OF DIRECTORS

OFFICERS

Mr. Shlomo Spetner, Chairman

Mrs. Aliza Sklare, CPA, Treasurer

Mrs. Miriam Yarmak, NCSP, Secretary

MEMBERS

Sherry Berlin, JD

Moshay Cooper, MD

Hinda Dubin, MD

Marvin Itzkowitz, JD

Mrs. Sara Itzkowitz

Rabbi Zev Katz

Mrs. Shifra Rabenstein

Mrs. Mindy Spetner

Janet Sunness, MD

Ms. Oriana Kelemer, Observer

Mrs. Sarah Brody

Director of Development

Katherine Endy, PhD

Director of Assessment & Compliance

Mrs. Bracha Frohlich

Academic Advisor

Mrs. Laura Ann Glazer

Office Administrator &
Human Resources Coordinator

Ms. Donna Guerin

Librarian

Mrs. Shira Heideman

Director of Admissions & Student Services

Mrs. Shira Hochheimer

General Studies Department Chair
Director of Data & Technology

Mr. Daniel Katibian

Chief Financial Officer

Mrs. Malka Kravitz

Administrative Assistant

Mrs. Yocheved Lapidus

Academic Advisor

Mrs. Sima Oratz

Bursar

Mrs. Tova Rappaport

Director of Financial Aid

Mrs. Cindy Ring

Registrar & Academic Advisor

Mrs. Chaya Tandler

ISAP Liaison



6

THE WITS ENVIRONMENT

“At WITS, versus a secular college, I was not compromising on any of my hashkafic beliefs. I grew so much while earning my BA!”

- SF

WITS students not only benefit from a strong Torah environment but are also guided by our Rabbanim and Mechanchos, creating a supportive and nurturing atmosphere. Surrounded by like-minded friends, this strong social environment is particularly crucial during this stage of life. What makes WITS truly distinctive is its response to the current challenging climate. With the troubling rise of antisemitism on secular college campuses, the significance of providing a safe haven for our young women pursuing higher education



has become even more apparent. College campuses today present formidable challenges for young adults, making the Women’s Institute of Torah Seminary & College a vital alternative. WITS offers Orthodox women a quality undergraduate education, preparing them not just academically but also within the framework of their faith. Here, students grow in a positive, Jewish environment, shielded from external pressures, in an atmosphere where they can thrive academically and spiritually.

WITS serves as a vital bridge between seminary and the next stages of life, dedicated to providing young women with the necessary tools to excel not only in their homes but also in graduate school or the workplace.



ACADEMIC EXCELLENCE



Continually expanding course offerings to meet the evolving needs of students, WITS guides career choices through a Torah lens, preparing students for success in various professional fields. The campus exudes an air of professionalism, reflecting a commitment to academic excellence.



Over the past 26 years, WITS has educated over 2,200 women, propelling them to remarkable success in competitive graduate programs and diverse professional fields such as education, computer science, accounting, health science, psychology, business, medicine, and law. Graduates consistently enter top-tier graduate

programs including Johns Hopkins, Georgetown, Columbia, Perdue, NYU, and University of Maryland, among others, and emerge not only as experts in their fields but also as influential community members, contributing to both their professions and the creation of nurturing homes.

What sets WITS apart is its unique blend of seminary and college, providing college courses in a frum setting alongside a high-level and relevant Kodesh curriculum, allowing students to expand and strengthen their foundation in Avodas Hashem while pursuing an accredited college degree.





ACCREDITATION

WITS has achieved remarkable milestones in its pursuit of academic excellence.

WITS is nationally accredited by The Association of Institutions of Jewish Studies (AIJS) and approved by the Maryland Higher Education Commission as a degree-granting institution. In 2022, WITS reached an extraordinary milestone. The institution qualified and received recognition from the prestigious **Middle States Commission on Higher Education** as a candidate institution and member.



98% Graduate School Acceptance Rate



Our graduate school acceptance rate speaks volumes about the institution's commitment to academic rigor and standards. It symbolizes a significant leap forward, positioning WITS among the recognized and respected educational institutions in the region. Moreover, this achievement is a testament to the relentless dedication of the faculty and administration whose goal is the success of each and every student.

WITS is an institution in constant motion, continually striving to strengthen its programs, faculty, and resources, thereby opening up more and more opportunities for students to excel and thrive in their academic pursuits.

“

WITS provided us with access to top college classes, excellent professors, and content designed to stimulate and support our professional growth.

- Adina Weg '24

”





AREAS OF STUDY



JUDAIC STUDIES



COMPUTER SCIENCE



BIOMEDICAL ENGINEERING

In partnership with Stevenson University



NEW!



PRE-MED

In partnership with Stevenson University



NEW!



PSYCHOLOGY / SOCIAL WORK



SPEECH LANGUAGE PATHOLOGY



BUSINESS / ACCOUNTING



JEWISH EDUCATION

Masters Program



NEW!



PRE-HEALTH

- Occupational Therapy
- Nursing
- Physical Therapy
- Physician Assistant
- Dental Hygiene
- Genetic Counseling
- Pharmacy
- Neuroscience



GRAPHIC DESIGN



Rebbetzin Ettie Rosenbaum Executive Dean / Menacheles

At the heart of our academic journey are the exceptional faculty members who define WITS. In our Kodesh classes, students are privileged to learn from esteemed Rabanim and Mechanchos. What truly sets WITS apart is the opportunity for our students to be mentored and guided by these faculty members. Many alumnae continue this connection, turning to them for שאלות and הדרכה (guidance and advice) long after graduation.

Rabbi Yirmiyahu Benyowitz, DTL

הלכות כשרות

Rebbetzin Lea Feldman

הליכות בת ישראל

Mrs. Bracha Frohlich

Torah Growth and Development

Rabbi Menachem Goldberger, MA

דרך השם / ספרי חסידות

Rebbetzin Bracha Goldberger

תומר דבורה

Rabbi Pinchas Gross, DTL

Letters Through the Ages

Rebbetzin Mindi Hauer

Relationships and Family Dynamics

Rabbi Azriel Hauptman, MEd

Controversies from Within and Without

Rabbi Dovid Heber, MS

מגילת אסתר | הלכות ברכות

Women in the World

Mrs. Shira Hochheimer, MA

שרשי המצוות

Mrs. Gitty Horowitz

The Role/Impact of the Jewish Woman

Mrs. Aviva Orlian, MS

מגילת איכה

Mrs. Shifra Rabenstein, MS

מועדים בחומש

Mrs. Rachelle Reingold

ספר יחזקאל

Rabbi Daniel Rose, DTL

Business Ethics and Halacha

Medical Ethics and Halacha

Rebbetzin Ettie Rosenbaum

נשים בתנ"ך

Mrs. Rivka Segal, MEd

תהלים

Rabbi Yonah Sklare, DTL

עניינים בתנ"ך

Rabbi Yochanan Stengel, MMS

שמירת הלשון

Mrs. Yael Weisbord

שיר השירים

Mrs. Cherise Weissman, MS

תפילה

Mrs. Sara Malka Winter

Teaching תנ"ך for Impact

& Independence



Leslie G. Klein, PhD
Academic Dean

Mrs. Esther Apt, BA

Business

Robert M. Benedek, PhD

Psychology

Mrs. Raquel Betesh, MS

Education, English, Psychology

Mrs. Shayna Cohn, MS

English

Mrs. Leeba Dembitzer, MS

Communication Sciences & Disorders

Moshe Dreyfuss, PhD, MSPH

Science

Mr. Ephraim Eisenberger, MS

Math | Science

Mr. Elazar Feigenbaum, MS

Computer Science

Mrs. Yocheved Glaser, BA

Art | Graphic Art

Mrs. Devorah Gradon, MS

Communication Sciences & Disorders

Mr. Daniel Harris, BS

Computer Science

Mrs. Shira Hochheimer, MA

General Studies Coordinator

Joshua Hollander, DC, MBA

Economics

Judah Katz, JD

Business Law

Mrs. Shira Malka Katz, MEd

Psychology

Mrs. Ruth Kinzer, MEd

Education | Computer Concepts

Leslie G. Klein, PhD

History, Communication

Chaya Sima Koenigsberg, PhD

History

Mrs. Miri Kramer

Graphic Arts

Mrs. Sheryl Lasson, MS

Communication Sciences & Disorders

Mrs. Dorie Lauer, MA

Education

Rachel Lebowitz, DNP

Medical Terminology

Ms. Abby Lewis, MSW

Art | Graphic Art

Mr. Akiva Lombardo, MS

Computer Science

Mrs. Tova Gittel Lowy, MS

Communication Sciences & Disorders

Anil Malaki, BMBS, MPH

Science

Rabbi Ben Zion Malin, CPA

Accounting

Mrs. Chavi Markowitz, BS

Computer Science

Mrs. Rivka Maron, MA

History

Miriam Shira Menken, PhD

Psychology/Sociology

Ms. Megan Miskowski, MS

Program Coordinator and Instructor
Communication Sciences & Disorders

Ms. Ara Nole, MS

Communication Sciences & Disorders

Mrs. Eve Poupko, MA

Math

Jodi Reches, AuD

Communication Sciences & Disorders

Gary Rockwood, PhD

Psychology

Jerrold Rosenbaum, DEng

Computer Science

Gila Saban, PsyD

Psychology

Arthur Salhanick, PhD

Lab Coordinator and Instructor
Science

Adele Salhanick, PhD

Science

Linda Samuels, DC

Science

Micah Segelman, PhD

Business

Mrs. Goldie Silberberg, BFA

Program Coordinator and Instructor
Graphic Arts

Mrs. Devorah Stern, MS

Psychology

Rebecca Stoil, PhD

English | History

Woldegabr Temesghen, MS

Science

Mrs. Devorah Urszuy, MS

Education

Lorraine Wizda, PhD

Psychology



2024-2025 COURSE OFFERINGS

JUDAIC COURSES

Business Ethics and Jewish Law
 Challenging Concepts in Tanach & Midrash
 Controversies from Within and Without
 Ethical Interpersonal Communication
 Exile to Redemption: History of the Jews at the End of the First Temple Era
 Halichos Bas Yisroel
 Jewish Holidays in Biblical and Talmudic Literature
 Jewish Law: Blessings
 Jewish Law: Dietary Law
 Letters Through the Ages
 Living Tehillim in Challenging Times
 Living Tefila
 Medical Ethics and Jewish Law
 Megillas Eicha (Lamentations): Illuminating the Darkness
 Megillas Esther
 Megillas Shir HaShirim
 Relationship Building and Family Dynamics
 Roots of the Mitzvos
 Teaching Tanach for Impact & Independence
 The Life and Works of Ramchal
 The Role and Impact of the Jewish Woman
 Topics in Chassidic Thought
 Torah Growth and Development
 Unsung Heroines
 Women in the World

BUSINESS

Business Law
 Healthcare in the United States
 Introduction to Marketing

Microeconomics
 Principles of Accounting I and II
 Principles of Management & Organizational Behavior

COMPUTER SCIENCE

Calculus I and II
 Computer Programming I and II
 Computer Systems Architecture
 Data, Computer Systems and Networks
 Database Management Systems
 Data Structures
 Discrete Structures and Algorithms
 Introduction to Product Development
 Linear Algebra
 Programming in Python
 Programming Languages
 Senior Seminar in Computer Science
 Web Programming

COMMUNICATION SCIENCES & DISORDERS

ASHA required courses
 Anatomical and Physiological Bases of Speech
 Audiology
 Aural Rehabilitation
 Clinical Methods and Observation in Speech-Language
 Clinical Practicum in Speech-Language Pathology
 Introduction to Communication Disorders
 Language Disorders
 Neurological Bases of Communication
 Normal Speech and Language Development
 Phonetics

Speech and Hearing Science
Speech Sound Disorders

EDUCATION

ABA Therapy
Classroom Techniques and Management
Field Experience in Education
Foundations of Teaching and Learning
Instructional Design
Integrating Technology in the Classroom
Psychological Foundations of Education
Survey of Exceptional Children
Student Teaching

GRAPHIC DESIGN

Advanced Design Studio I and II
Computer Graphic Design I and II
Digital Multimedia I and II
Foundations of Design
Introduction to Adobe Creative Suite
Senior Portfolio

PRE-HEALTH SCIENCES

Anatomy and Physiology I and II
Biochemistry
Biology I: Molecular and Cells
Fundamentals of Physics
General Chemistry
Medical Terminology
Microbiology
Nutrition
Psychobiology

PSYCHOLOGY

Abnormal Psychology
Group Dynamics
Human Growth and Development
Introduction to Counseling
Introduction to Psychology
Multicultural Psychology
Psychobiology
Psychological Foundations of Education
Psychological Perspectives on Psalms
Research Methods in Psychology
Senior Thesis in Psychology
Social Psychology
Survey of Exceptional Children

LIBERAL ARTS

College Algebra
Computer Concepts and Applications
Conceptual Physics
English Composition I and II
Food and Culture
Foundations of Adobe Creative Suite
Fundamentals of Biology
Fundamentals of Communication
Introduction to Sociology
Introduction to Statistics
Jews and Christians in Renaissance Europe
Preserving the Past
Society and Politics in American History
Women in Jewish History and Culture





16

JOINT HIGH SCHOOL / COLLEGE PROGRAM

The WITS program for dual high school and college enrollment caters to local high school seniors by enabling them to attend their regular high school classes while simultaneously participating in college-level courses. Through this initiative, students can earn college credits, providing them with an advantageous beginning to their higher education journey. This program not only allows students to academically challenge themselves but also offers a valuable opportunity to gain college experience. Additionally, it has the potential to shorten the time and reduce the cost required to complete a degree after high school.



When I graduated from high school I reached a crossroad, I felt torn between two dreams, follow my lifelong dream of becoming an attorney, or be a homemaker, wife, and mother. WITS showed me that I could lead a meaningful career and build a beautiful home at the same time. - Yakira (Green) Price



ISRAEL STUDY ABROAD PROGRAM (ISAP)



WITS gave me the place to expand and solidify the rich feeling I came back with from my year in Israel!



- Racheli (Rappaport) Nussbaum

The WITS Israel Study Abroad Program (ISAP) provides students with the opportunity to earn college credit for seminary courses in Israel. WITS degree-seeking students can receive up to 30 credits towards their Bachelor of Arts or Bachelor of Science degree, doubling the benefits of their year abroad in Eretz Yisroel. Beyond the transformative experience of a year filled with inspiration and personal growth, participants gain a significant head start on their degree at WITS.

96%

Retention

Rate





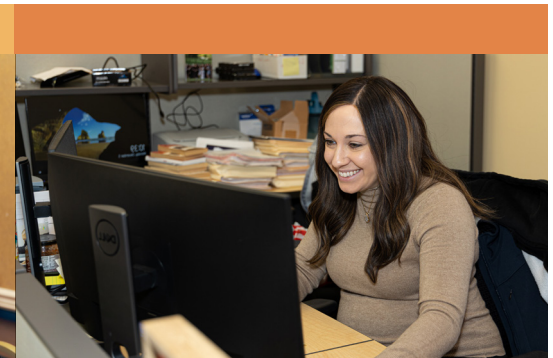
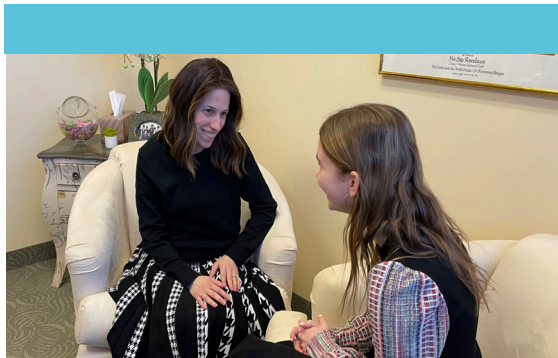
ADVISEMENT & SUPPORT

WITS is committed to providing unwavering advisement and support to ensure our students thrive at every stage of their academic journey. With advisor guidance every step of the way, our institution goes beyond traditional education by offering unparalleled support. From one-on-one academic advisement and career counseling to year-round professional development programs, we pave a seamless pathway for students from their seminary experience in Israel through graduation at WITS.

Our experienced Director of Career Services conducts personalized meetings with students, understanding their interests, strengths, and goals to help identify suitable career paths and craft tailored action plans. Dedicated academic advisors collaborate closely with students, creating

personalized academic plans, assisting in major and course selections aligned with their career aspirations. This support does not end at graduation; our advisors continue to assist alumnae facing career-related questions or transitions, providing guidance tailored to each woman's unique needs.

At WITS, advisement is not just a service; it's a vital component ensuring each student's success throughout the program and preparing her for the next steps in her journey. Additionally, our Rabbanim and Mechanchos devote dedicated time each week to meet with students, either in small groups or one-on-one, offering invaluable guidance and advice.



INTERNSHIPS



WITS is dedicated to propelling students towards success through our robust Internships and Job Placements program. By leveraging our extensive network of employers and alumnae, as well as our dynamic online job board, we actively connect students with valuable internship and job opportunities.

JOB PLACEMENT



In 2023, we proudly introduced the **WITS Job Fair**, an innovative platform designed to empower students in exploring diverse career possibilities, expanding their professional networks, and uncovering exciting employment opportunities within their local community.

FIELD EXPERIENCE



At WITS, our dedication goes beyond traditional education; we are committed to cultivating real-world experiences and career pathways for our students. In pursuit of this commitment, WITS has recently introduced a field experience program designed for psychology and education students. This initiative not only allows students to earn credits towards their degrees but also provides them with invaluable hands-on experience in their respective fields.



CAREER COUNSELING SERVICES

Career Counseling Services are crucial to our students' ability to achieve their goals in the professional world both in graduate school and in demanding work environments. Our career services empower students with the knowledge, skills, and confidence they need to navigate the

secular world and succeed in their careers and life while staying true to their values. Academic and career advisors, visiting lecturers, seminars, mentorship programs, and practical workshops help our students identify and achieve the career path that best meets their talents and life goals.

WOMEN IN THE WORKPLACE

Our professional development programs include a full day "Women in the Workplace" seminar which presents students with the opportunities and challenges that women may encounter in the workplace and in graduate school. The seminar is led by various speakers from diverse professional experiences, including both local experts from Baltimore and distinguished guests from out of town.



CAREER DAY

WITS' Career Day introduces WITS students and local high school seniors to the many career paths and options available to them - many of which they never previously considered. Career Day includes seven panels with close to 40 professionals from the Jewish community, including many alumnae. A networking session after the panels allows students to converse directly with panelists.



PROFESSIONAL DEVELOPMENT SEMINARS

RESUME WRITING SEMINAR:

Via one-on-one guidance and a special seminar, career guidance staff and a resume specialist help students craft a compelling resume and cover letter, essential for landing their dream job or internship.

INTERVIEW SKILLS SEMINAR:

An interview and communications specialist conducts a seminar on interview etiquette and how to impress at an interview. Our Director of Career Services engages students in one-on-one mock interviews to help them gain confidence and polish their skills.

RESEARCH SEMINAR:

This annual seminar instructs students on how to conduct effective research on the undergraduate and graduate levels.

CAREER MENTORSHIP PROGRAM

WITS' Career Mentorship Program pairs students with alumnae who are working in their field of study. Launched in 2021, this program gives students hands-on guidance and a taste of what it's like to be a religious Jewish woman in her respective field.





STUDENT PROGRAMS



YIMEI IYUN (SYMPOSIA)

ROSH HASHANA

YOM KIPPUR

TU B'SHVAT

WITS provides students with Yimei Iyun events throughout the year, aligning with the Jewish calendar to offer inspiration and foster connection to these special times. The Yimei Iyun showcase esteemed speakers from the Baltimore community and beyond, including Rabbi Silber, Rabbi Weisbord, Rabbi Stengel, Rabbi Goldberger, Rabbi Feldheim, Mrs. Rabestein, Rabbi Breitowitz, and more.



CHAGIGAS (GET-TOGETHERS)



WITS hosts yearly celebrations for Chanukah and Purim, which are eagerly anticipated by both students and staff. These festivities unite everyone through games, delicious cuisine, exciting prizes, song, dance, and more, fostering a joyful and welcoming atmosphere that strengthens student friendships and their positive connection to the school.

MEETINGS WITH RABBONIM & REBBETZINS



Extending beyond the classroom, students build lasting connections with Rabbanim and Mechanchos, turning to them for *שאלות* and *הדרכה*. These bonds are formed in an environment that fosters personal growth and spiritual development, providing students with a strong support system. In a stage of life when young women are making important life decisions, these relationships are truly life-changing. Many of our alumnae have maintained these connections, continuing to seek guidance and support long after graduation, helping them navigate both personal and professional challenges with confidence and wisdom.



To this day, I am still so connected to Rebbetzin Rosenbaum, turning to her for guidance, before making big decisions. WITS really gave me the opportunity to have these relationships for life, and I am so grateful for that.



- Loni (Jacob) Goldman



WITS / MAALOT ALUMNAE ASSOCIATION

OVER 2,200 ALUMNAE SINCE 1998

OUR MISSION

Under the guidance of the Menacheles, the WITS/Maalot Alumnae Association is committed to nurturing a lifelong community, to offer chizuk and resources for continued growth and success as thriving frum women in both their personal and professional lives. It also promotes positive connections between the institution and its diverse alumnae, fostering goodwill in the community, establishing an engaging alumnae program that stimulate interest, building loyalty and generating philanthropic support for the seminary and college.



CORE VALUES

- Maintaining a Keshet with Rabbanim and Faculty
- Torah Learning
- Professional Development
- Strengthening Family
- WITS Pride
- Fostering Friendship

ALUMNAE EVENTS

SEPTEMBER

YAMIM NORAIM VIRTUAL
ALUMNAE SHIUR

DECEMBER

"SPREAD THE LIGHT"
HONORING ALUMNAE CAMPAIGN

JANUARY

NEW GRADUATE EVENTS

JANUARY

Q&A: NAVIGATING THE TERRAIN - FRUM
WOMEN IN A SECULAR WORKPLACE

FEBRUARY

ISRAEL ALUMNAE REUNION & SHIUR
WITH REBBETZIN ROSENBAUM

MARCH

PROFESSIONAL DEVELOPMENT
CLASS

APRIL

JOB FAIR
WITS STUDENTS & ALUMNAE

APRIL

PRE-PESACH ALUMNAE SHIUR

MAY

AN EVENING OF PROFESSIONAL
DEVELOPMENT

JUNE

SHAVUOS ALUMNAE SHIUR
WITH ACTIVITY

ALUMNAE COUNCIL

EXECUTIVE COMMITTEE

Oriana Kelemer '15

President

Loni (Jacob) Goldman '04

Vice President

Shira (Beleck) Heideman '11,

Operational Director – Logistics

Yakira (Green) Price '20

Treasurer

COUNCIL MEMBERS

Hadassah (Gholian) Feldman '10

Health Science/Therapy Chair

Malka (Motzen) Kravitz '21

Data Analyst And Student Engagement Chair

Sarah (Rosensaft) Mutterperl '12

Business Divisional Chair

Adina (Levitan) Rabinowitz '14

Health Science/Therapy Chair

Yaffa (Elefant) Stern '15

Health Science/Therapy Chair

Yael Weiss '15

Computer Science Divisional Chair

Yael Zimberg '19

Education Divisional Chair



OUR FACILITY

WITS' renovated campus encompasses spacious and attractive classrooms alongside The Ben and Zelda Cohen Charitable Foundation Science Labs, a fully upgraded computer lab, a welcoming student lounge, and a comprehensive library.



2022-2023 UPGRADES

NEW SCIENCE LABS



In 2022, with support from The Ben and Zelda Cohen Charitable Foundation, WITS unveiled cutting-edge Science Labs. Two classrooms were transformed into a Physics Lab, a Biology/Chemistry Lab, and a fully equipped Prep Room. These advanced labs feature integrated classroom and lab spaces, including student workstations and a teacher's demonstration table. Designed for both basic and advanced experiments, they greatly enhance our students' grasp of scientific concepts.

SECURITY



New security measures at WITS feature a prominent security wall/door, along with upgraded cameras, enhanced lighting, a new intercom system, alarm, and panic system. A security guard is also on site during evening hours to ensure student safety as they exit the building.

TECHNOLOGY

WITS leverages technology to enhance learning and foster collaboration among students, faculty, and staff. Our classrooms feature interactive projectors, Zoom boards for real-time remote speaker interactions, and advanced audio systems. The library and student lounge provide loaner laptops and computers, while Mac and PC computer labs support versatile computer science and graphic design projects. Our science labs are equipped with digital microscopes for projection. Students have access to essential tools, including a learning management system and the latest versions of Office and Adobe software, maximizing their learning both inside and outside the classroom.



ENROLLMENT



RECRUITMENT



WITS employs strategic initiatives to boost enrollment numbers. Rebbetzin Rosenbaum, the Menacheles/ Executive Dean, and Dr. Klein, the Academic Dean, annually travel to Israel, connecting with ISAP students and recruiting from various seminaries. On-campus Parent Info Sessions provide essential information and address common questions, while Zoom open houses in the summer cater to a wider audience. Notably, these efforts have contributed to a significant uptick in WITS' enrollment over the past few years.

STUDENT ACHIEVEMENT

98%

of 2022-2023 Bachelor's degree recipients are **Employed** and/or **Pursuing continuing education** within 1 year of graduation.

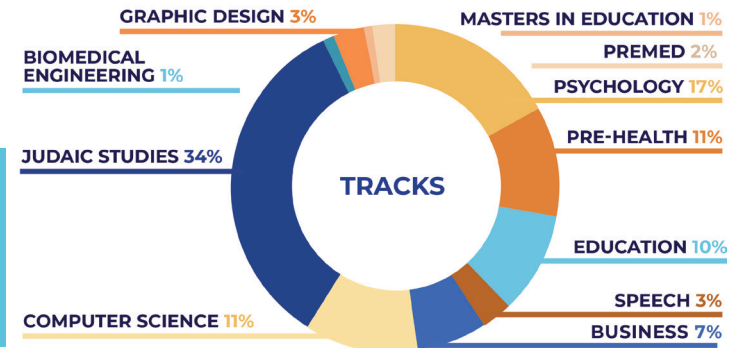
TOP GRADUATE SCHOOLS

- Columbia University
- George Washington University
- Goucher College
- Howard University
- Johns Hopkins University
- Loyola University Maryland
- New York Institute of Technology
- Notre Dame of Maryland University
- Rutgers University
- Stevenson University
- Temple University
- Towson University
- University of Baltimore
- University of Kentucky
- University of Maryland

TOP EMPLOYERS

- | | |
|--------------------------------|---------------------------------------|
| Autumn Lake Healthcare | MITRE Corporation |
| Bais Yaakov | Orthodox Union |
| Baltimore Dental | Response Alert, LLC |
| Beth Tfiloh | Sinai Hospital |
| Bnos Yisroel | St. Joseph Medical Center |
| BrandRight Marketing Group | Star-K |
| Carefirst, Inc | System Automation |
| Dr. Robert Cooper, LLC | Talmudical Academy |
| EmpowerED Solutions & Services | The Learning Tree ABA |
| Entrust Solutions Group | The Therapy Spot |
| Fun & Function | Theracare |
| Jewels | University of Houston |
| LTC Ally | University of Maryland Medical Center |
| Madison Trust Company | XOR Security |

CURRENT TRACKS BEING PURSUED



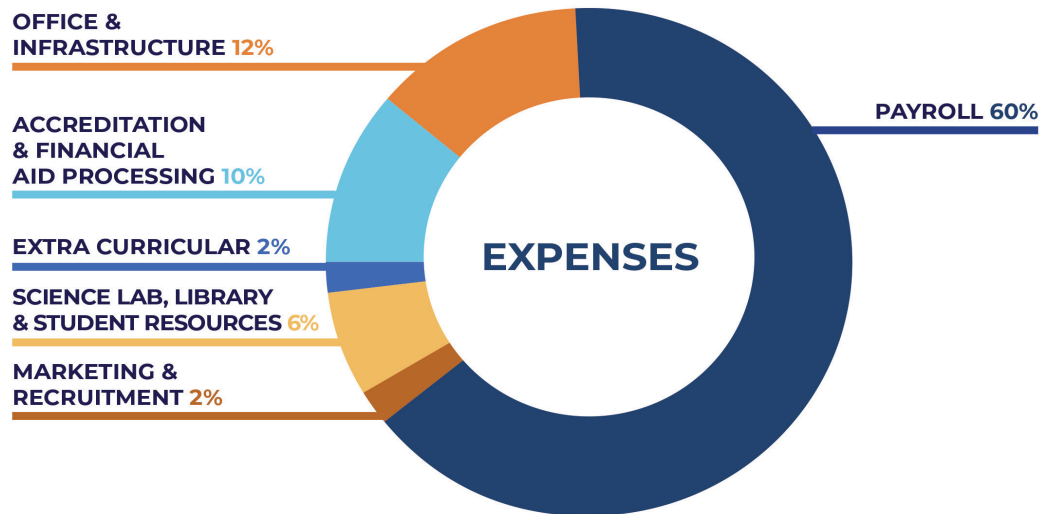
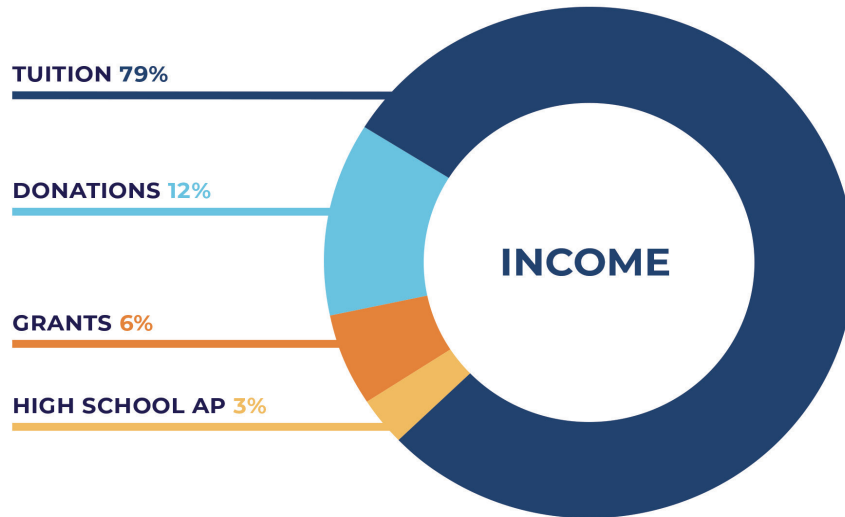
98%

Graduate School Acceptance Rate

Retention Rate - 96%

Graduation Rate - 91%

FINANCIALS



DONOR OPPORTUNITIES

FUNDS

- ▶ Student Scholarship Fund
- ▶ Security Fund
- ▶ Alumnae Fund
- ▶ Program Enhancement Fund
- ▶ Career Services Fund

SPONSORSHIPS

- ▶ Women in the Workplace \$5k
- ▶ Career Day \$5k
- ▶ Career Mentorship Program \$5k
- ▶ Resume Writing & Interview Skills Seminar \$5k
- ▶ Rosh Hashana Yom Iyun \$1k
- ▶ Yom Kippur Yom Iyun \$1k
- ▶ Lag B'Omer Program \$1k
- ▶ Tu'Bshvat Program \$1k
- ▶ Alumnae Shiur \$500
- ▶ Day of Learning \$180

FACILITY DEDICATIONS

- ▶ Student Lounge \$30k
- ▶ Large Classrooms (2 available) \$30k/each
- ▶ Other Classrooms (4 available) \$20k
- ▶ Executive Dean's Office \$20k
- ▶ Academic Dean's Office \$20k
- ▶ Science Labs Prep Room \$10k
- ▶ Mezuzos for Science Labs (3 available) \$5k/each
- ▶ Academic Advisor's Office (3 available) \$5k
- ▶ Small Office (2 available) \$5k



I am deeply impressed by the air of professionalism and the state-of-the-art facilities at WITS, which reflect a true commitment to academic excellence.

- Dr. Zipora Schorr





TO MAKE A DONATION
visit www.wits.edu/donate



Phone : 410-358-3114

Mail : info@wits.edu

Website : www.wits.edu

6602 Park Heights Avenue
Baltimore, Maryland 21215